

SBM-11 Bronze Horizontal Lift Check Valve Heavy, Screwed

Product Description

HSN 84813000

Product : 'SBM' Bronze Horizontal Lift Check Valve No.5
 Type of Pattern : Heavy Pattern
 Body Material cum Standard : GM (IS:318 Gr.LTB2)
 Description : Screwed in Cover
 Type of Seat : Integral seat
 Type of Disc : Renewable disc
 Trim : Cu-Alloy
 End Details : Screwed Female BSP threads to BS 21.

Testing & Certification

Body Test Pressure : 35.15Kg/cm²g (500Psig. Hyd.)
 Seat Test Pressure : 21.09Kg/cm²g (300Psig. Hyd.)

Our Works' Test Certificate is furnished with every supply.

Application

Water	Oil
-------	-----

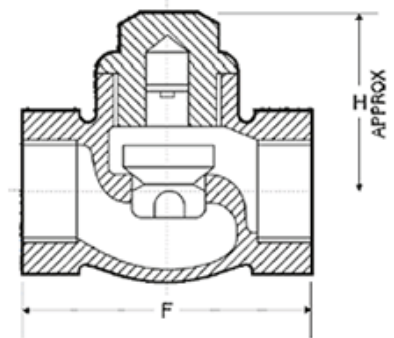


Materials of Construction

Components	Materials	Specifications
Body, Cover & Valve Disc	Leaded Tin Bronze	IS:318 Gr.LTB2

Dimensions (in mm)

Nominal Size	Nominal Size (Inches)	F	H
8	1/4	47	30
10	3/8	51	30
15	1/2	54	38
20	3/4	65	43
25	1	80	55
32	1.1/4	90	55
40	1.1/2	102	60
50	2	122	75
65	2.1/2	147	90
80	3	170	105
100	4	200	120



Notes

1. Product images are for illustration purposes only. Actual product may vary.
2. Actual dimensions may change over time, due to continual design improvements. Please confirm before placing order.