

IC-1 Investment Casting Ball Valve Screwed

Product Description

HSN 84818010

Product : Sant Investment Casting Ball Valve (CF-8)
 Pressure/Class /Rating : PN-40
 Body Material cum standard : SS 304 (CF-8)
 Product Description : Two Piece design
 Type of Seat : Renewable Teflon
 Trim : Stem, Ball Stainless Steel AISI-304
 Gland Packing : Teflon
 End Details : Screwed Female BSP Taper Threads to BS 21



Testing & Certification

Body Test Pressure : 60kg/cm² Hyd.
 Seat Test Pressure : 40kg/cm² Hyd.

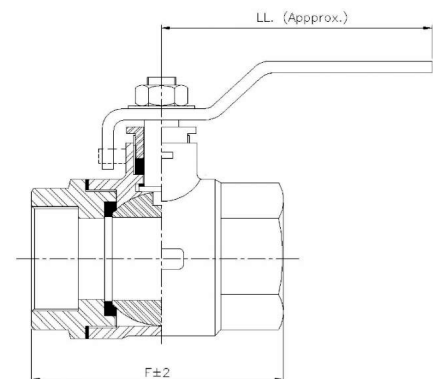
Our Works' Test Certificate is furnished with every supply.

Materials of Construction

| Components | Materials | Specifications |
|--|-----------------|-----------------|
| Body, Connector | Stainless Steel | AISI-304 (CF-8) |
| Ball, Stem | Stainless Steel | AISI-304 |
| Gasket, Gland Packing, Body Seats, Thrust Washer | PTFE | — |
| Stopper, Gland Nut, Handle & Fasteners | Mild Steel | — |

Dimensions (in mm)

| Nominal Size | Nominal Size (Inches) | F | LL (Approx.) |
|--------------|-----------------------|-------|--------------|
| 15 | 1/2 | 58±2 | 98 |
| 20 | 3/4 | 66±2 | 125 |
| 25 | 1 | 79±2 | 145 |
| 32 | 1.1/4 | 90±2 | 145 |
| 40 | 1.1/2 | 105±2 | 200 |
| 50 | 2 | 124±2 | 200 |



Notes

- Product images are for illustration purposes only. Actual product may vary.
- Actual dimensions may change over time, due to continual design improvements. Please confirm before placing order.