

DP2 Dual Plate Water Check Valve

Product Description

HSN 84813000

Product : Sant Dual Plate Wafer Check Valve
 Pressure Rating : PN-25
 Body Material cum Standard : Ductile Iron
 Product Description : Wafer Type Spring Loaded
 Type of Seat : EPDM Rubber Lining
 Type of Disc : SS 304 (CF-8)
 Trim : Spring & Pins SS
 End Details : Wafer type suitable for clamping between flanges as per ASME B 16.5 Class-150



Testing & Certification

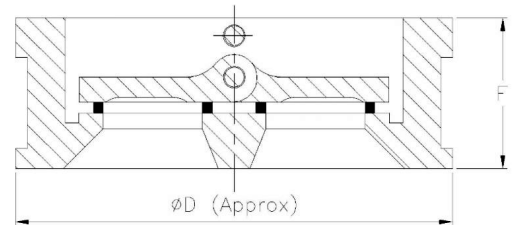
Body Test Pressure : 3.8 MPa Hyd.
 Seat Test Pressure : 2.7 MPa Hyd.

Materials of Construction

Components	Materials	Specifications
Body	Ductile Iron	-
Body Seat	E.P.D.M	-
Disc	CF-8	-
Hinge Pin	SS	-
Stop Pin	SS	-
Spring	Spring Steel	-
Bush	P.T.F.E	-
Plug	Carbon Steel	-

Dimensions (in mm)

Size	F±2	D
50	43	107
65	46	127
80	64	142
100	64	168
125	70	193
150	76	223
200	89	283
250	114	340
300	143	390



Notes

1. Product images are for illustration purposes only. Actual product may vary.

2. Actual dimensions may change over time, due to continual design improvements. Please confirm before placing order.