

## CR-27A Cast Iron Butterfly Valve Wafer Type

### Product Description

HSN 84818030

Product : 'SANT' C.I. Butterfly Valve  
 Type of Pattern : Wafer Type  
 Pressure / Class / Rating : PN 20  
 Body Material cum Standard : Cast Iron to IS:210 Gr.FG200  
 Description : Wafer Type  
 Type of Seat : Nitrile / EPDM Lining  
 Type of Disc : SS Seat CF8  
 Trim : SS AISI-410  
 End Details : Suitable insertion between Flanges as per BS 10 Table D/E or ASME B 16.1, Class 125

**Note : Gear system will be provided for size above 150mm.**

### Testing & Certification

Body Test Pressure : 3.0MPa  
 Seat Test Pressure : 2.2MPa

Our Works' Test Certificate is furnished with every supply.

### Application

Water	Oil
-------	-----

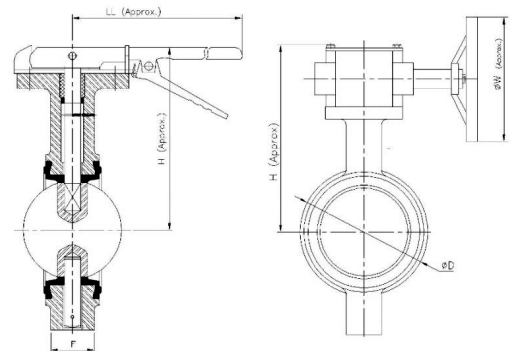


### Materials of Construction

Components	Materials	Specifications
Lower Stem, Upper Stem	S.S	AISI-410
Index Plate	Carbon Steel	—
Body, Gear box, Handwheel	C.I.	IS:210 Gr.FG200
Body Lining	Rubber	Nitrile / EPDM Lining
Disc	S.S.	CF8
Bolt & Nuts	Steel	SS-304
Lever	M.S. / D.I.	—

### Dimensions (in mm)

Nominal Size	Nominal Size (Inches)	F	ØD	H (Approx.)	H1 (Approx.)	LL (Approx.)	ØW (Approx.)
40	1.1/2	33±2	85	145	—	175	—
50	2	43±2	95	150	—	175	—
65	2.1/2	46±2	110	165	—	175	—
80	3	46±2	125	175	—	260	—
100	4	52±2	153	200	—	260	—
125	5	56±2	179	210	—	260	—
150	6	56±2	209	245	—	260	—
200	8	60±2	260	—	335	—	240
250	10	68±2	315	—	375	—	240
300	12	78±3	370	—	480	—	285



### Notes

1. Product images are for illustration purposes only. Actual product may vary.