

IBR-7 Bronze Combined Feed Check Valve Flanged (IBR Approved)

Product Description

HSN 84813000

Product : 'SANT' Bronze Combined Feed Check Valve
 Type of Pattern : Right Angle Pattern
 Body Material cum Standard : Bronze IBR 282(a)(iv) Gr.B
 Description : Bolted Gland Flange & Screwed in cover
 Type of Seat : Integral
 Type of Disc : Renewable Disc
 Trim : Cu-Alloy
 Gland Packing : Expanded Pure Flexible Graphite
 End Details : Flanges as per BS 10 Table H F.F. undrilled



Testing & Certification

Body Test Pressure : 500 Psig.Hyd.
 Seat Test Pressure : 500 Psig. Hyd. & 250 Psig. Steam
 Working Pressure : Max.BOP 250 Psig.(17.58Kg/cm²)
 Maximum Working Temperature: 225°C (435°F)

Test Certificate in Form III-C as per IBR is furnished with every supply.

Application

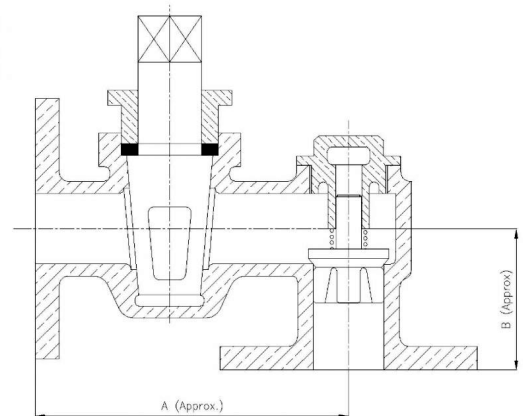
Water	Steam
-------	-------

Materials of Construction

Components	Materials	Specifications
Body, Bonnet, Valve Disc, Plug & Gland	Bronze	IBR 282(a)(iv) Gr.B
Gland Packing	Expanded Pure Flexible Graphite	—
Spring	Phosphorus Bronze	IS:7608
Fasteners	Mild Steel	—

Dimensions (in mm)

Nominal Size	Nominal Size (Inches)	A (Approx.)	B (Approx.)
15	1/2	108	51
20	3/4	113	51
25	1	137	60
32	1.1/4	159	70
40	1.1/2	165	80
50	2	203	86



Notes

- Product images are for illustration purposes only. Actual product may vary.
- Actual dimensions may change over time, due to continual design improvements. Please confirm before placing order.