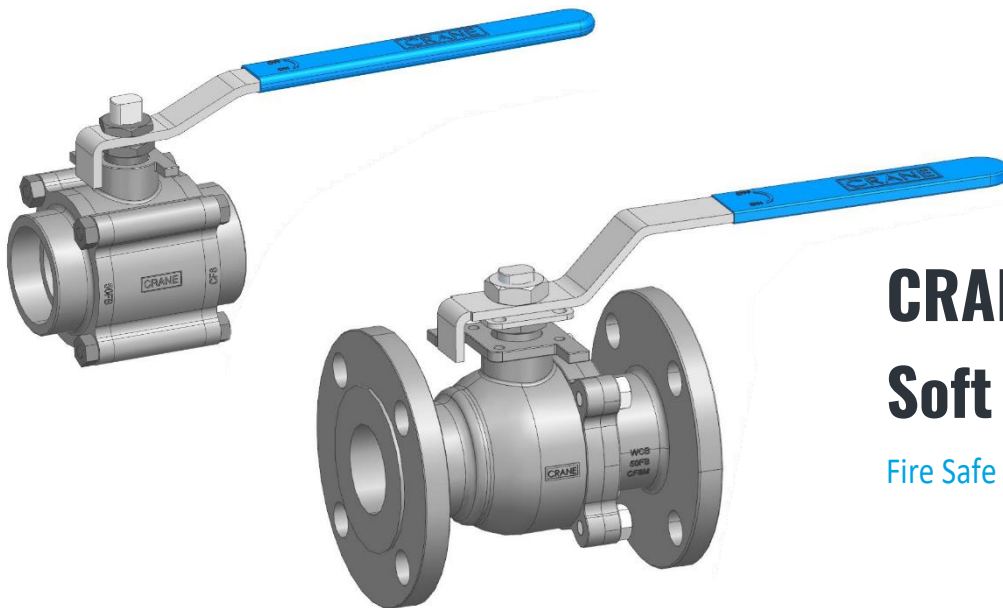


CRANE



Process Ball Valves with Quality, Performance and Safety Features!



CRANE® India
Soft Seated Ball Valves

Fire Safe Certified#

CRANE

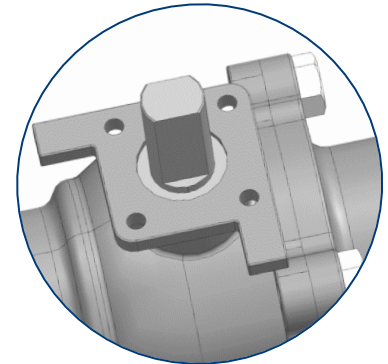
v in www.cranecpe.com

CRANE

Features and Benefits

ISO Mounting Pad

ISO 5211 mounting pad allows precise mounting of actuator, mounting bolts are independent and exact alignment prevents side load and out-of-line wear for flanged end valves

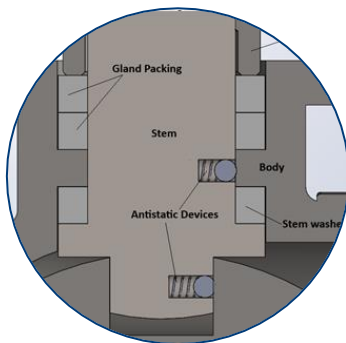
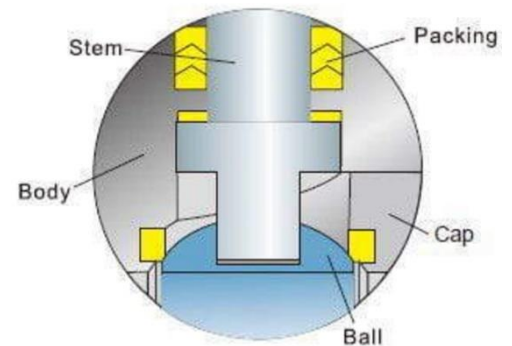


Solid Ball with Mirror-finish

Solid Ball provides straight through flow and real full-port performance characteristics. The solid construction of the balls also guarantees higher structural strength and provides safety in the service involving thermal expansion

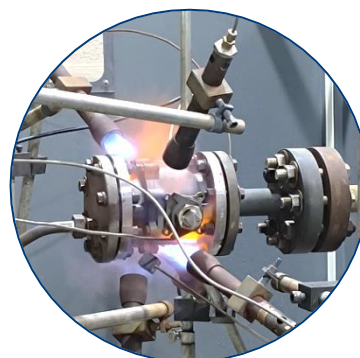
Blow-out proof stem

Stem has larger diameter at stem collar inside body that prevents it from blowing out in case of pressure build up



Antistatic Design

Critical safety feature that helps prevent the buildup of static electricity during valve operation



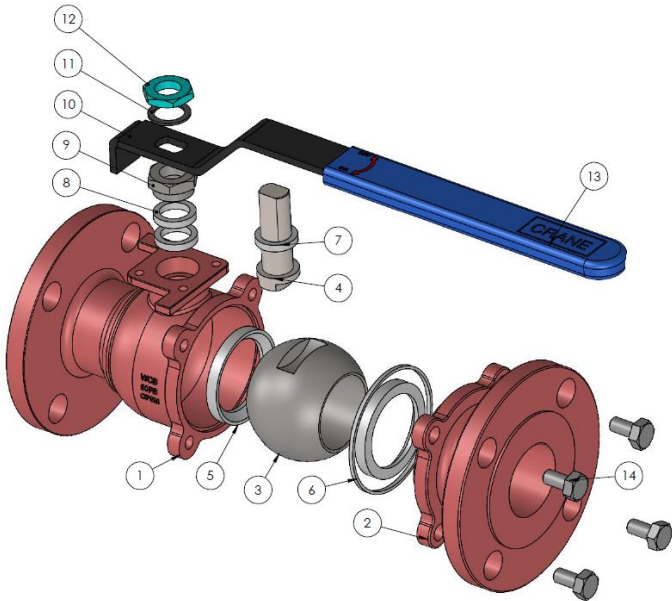
Fire Safe Design

Secondary metal sealing on body minimizes the leakage, in case of a fire in the pipeline



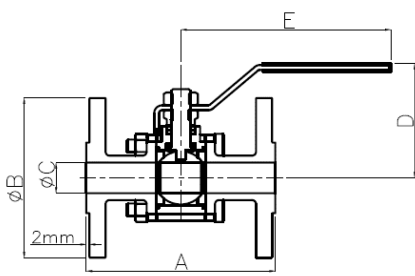
Technical Specifications

Flanged end - Class 150 / Class 300 Full Bore

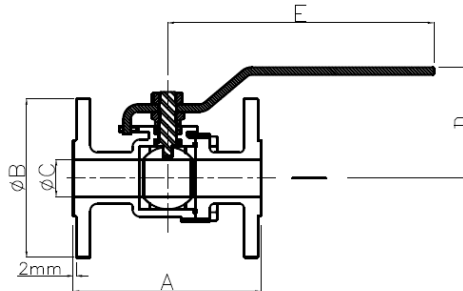


PART NO.	PART	QTY
1	BODY	1
2	TAIL PIECE	1
3	BALL	1
4	STEM	1
5	SEAT	2
6	BODY SEAL	1
7	STEM SEAL	1
8	GLAND PACKING	2
9	GLAND NUT	1
10	LEVER	1
11	WASHER	1
12	LEVER NUT	1
13	LEVER GRIP	1
14	BOLT	4

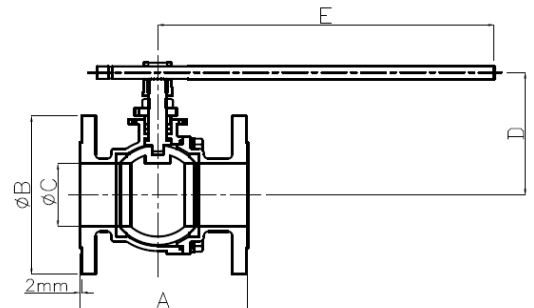
Dimensions



#150 DN15-DN20



#150 DN25-DN50
#300 DN15-DN40



#150 DN65-DN150
#300 DN50-DN150

Size		A		Ø B		Ø C	D	E	Weight	
NPS	DN	#150	#300	#150	#300				#150	#300
1/2"	15	108	140	89	95	13	80	155	1.7	2.1
3/4"	20	117	152	98	117	19	85	177	2.4	3.2
1"	25	127	165	110	124	24	90	175	2.4	4.3
1 1/2"	40	165	190	125	155	37	110	250	5.2	8.1
2"	50	178	216	150	165	49	146	320	8.0	10.8
2 1/2"	65	190	241	180	190	65	166	510	14.0	21.5
3"	80	203	283	190	210	75	186	510	17.0	30.0
4"	100	228	305	230	254	100	225	615	30.0	50.0
6"	150	267	403	280	318	148	275	615	45.0	142.0

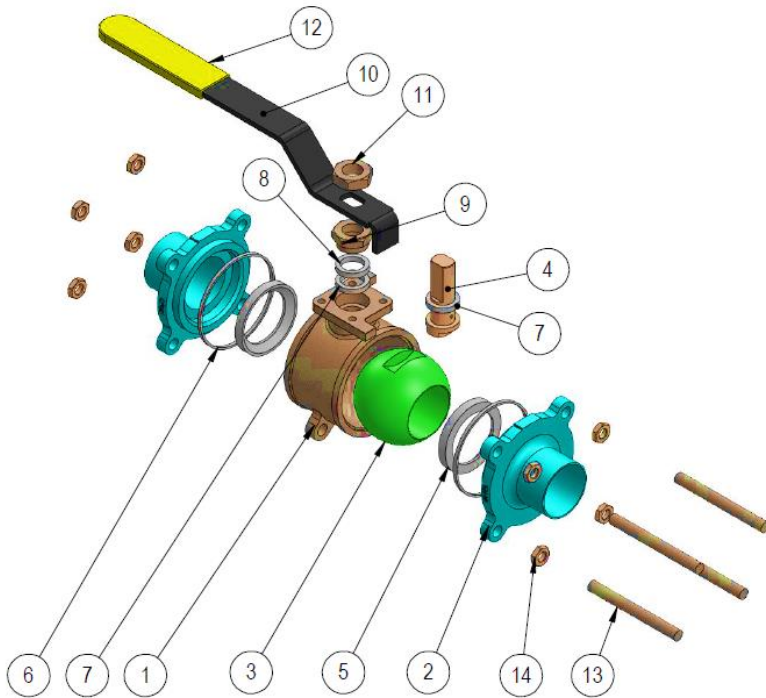
Test Pressures (bar)

As per API 598	Flanged	
	Class 150	Class 300
Shell - Hydrotest	30	76
Seat - Pneumatic	7	7

All dimensions are in mm and weights are in kg
 DN15-DN20 are in 3 piece construction
 DN150 #300 is Gearbox operated

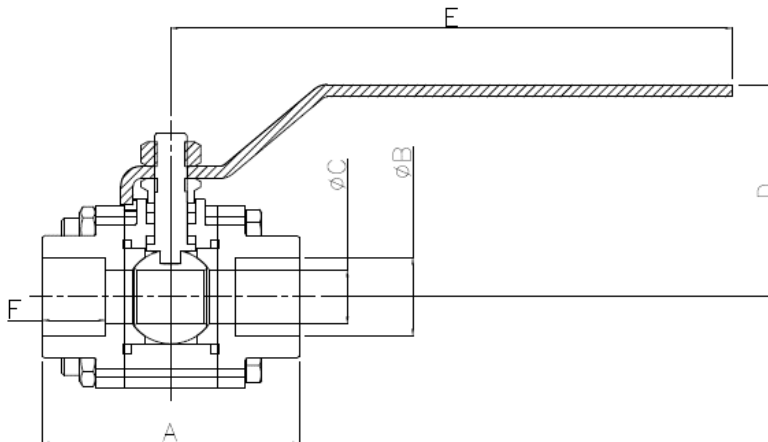
Technical Specifications

Screwed/ Socket-weld end - Class 600 Full Bore



PART NO.	PART	QTY
1	BODY	1
2	TAIL PIECE	2
3	BALL	1
4	STEM	1
5	SEAT	2
6	BODY SEAL	1
7	STEM SEAL	1
8	GLAND PACKING	2
9	GLAND NUT	1
10	LEVER	1
11	LEVER NUT	1
12	LEVER GRIP	1
13	BODY STUDS	4
14	STUD NUT	4

Dimensions



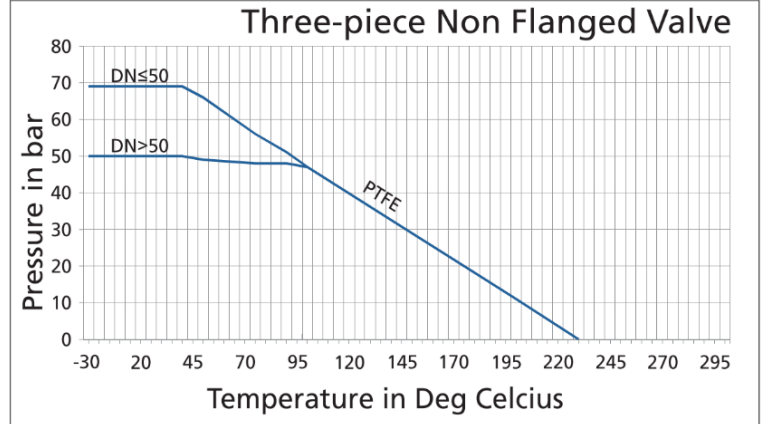
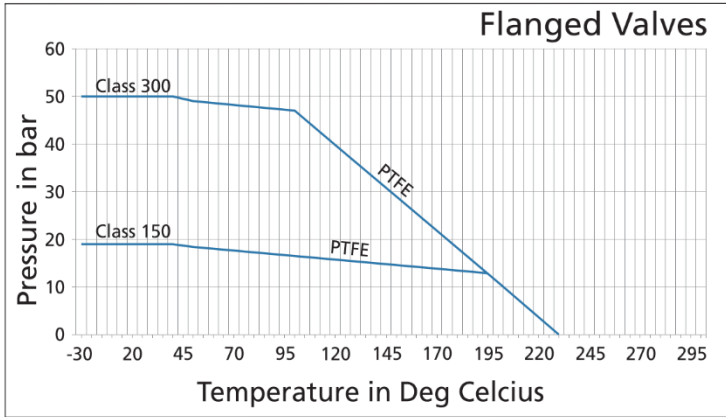
Size		A	ø B +0.5mm	ø C (min)	D (min)	E	ø F (min)	Weight
NPS	DN							
1/2"	15	65	18	11	60	145	10	0.7
3/4"	20	75	27	17	70	175	13	1.4
1"	25	89	33.8	24	75	175	13	1.7
1 1/2"	40	115	48.6	37	100	240	13	3.9
2"	50	125	61.1	49	120	330	16	4.1

Test Pressures (bar)

As per API 598	Screwed / Socket Welds
	Class 600
Shell - Hydrotest	211
Seat - Pneumatic	7

Technical Specifications

Pressure Temperature Charts – PTFE Seat Material



Ordering Information

BV	2	025	F	F1	W6	PT	L
BV	Type	Size	Bore	Ends	Body/Trim	Seats & Seals	Operator
Ball Valve	2 - Two-piece	015	F - Full Bore	F1 - Flanged # 150	W4 - WCB/304	PT - PTFE (Non-Fire Safe)	L - Lever
				F3 - Flanged # 300	W6 - WCB/316	GF - GFT (Non-Fire Safe)	G - Gear
	3 - Three-piece	020	R - Reduced Bore	SW - Socket Weld #600	M6 - CF8M/316	PE - Peek * (Non-Fire Safe)	OS - SS304 Lever
				SN - Screwed NPT #600	C4 - CF8/304	FP - PTFE Seat & Grafoil Seals (Fire Safe)	XX - Actuator Model / Type
				SB - Screwed BSP #600	M3 - CF3M/316L	FG - GFT Seat & Grafoil Seals (Fire Safe)	
				ST - Screwed BSPT #600		FE - Peek Seat & Grafoil Seals (Fire Safe) *	
				BW - Butt Weld OD Tubing *			
				TC - ASME BPE TC End *			

* Consult Factory

Fire Safe is available in Full Bore Flanged ends only

Actuator Selection Chart

Class 150 – Revo Double Acting

Line Pressure 20 Bar

Size		Air Supply - 4 Bar	Air Supply - 5 Bar	Air Supply - 6 Bar
1/2"	DN15	RD7002003000000	RD7002003000000	RD7002003000000
3/4"	DN20	RD7006005000000	RD7002004000000	RD7002004000000
1"	DN25	RD7006005000000	RD7006005000000	RD7006005000000
1 1/2"	DN40	RD7006005000000	RD7006005000000	RD7006005000000
2"	DN50	RD5012005000000	RD5012005000000	RD5012005000000
2 1/2"	DN65	RD5025005000000	RD5012005000000	RD5012005000000
3"	DN80	RD5025005000000	RD5025005000000	RD5025005000000
4"	DN100	RD5050007000000	RD5050007000000	RD5050007000000
6"	DN150	RD5090007000000	RD5090007000000	RD5090007000000

Line Pressure 10 Bar

Air Supply - 4 Bar	Air Supply - 5 Bar	Air Supply - 6 Bar
RD7002003000000	RD7002003000000	RD7002003000000
RD7002004000000	RD7002004000000	RD7002004000000
RD7006005000000	RD7006005000000	RD7006005000000
RD7006005000000	RD7006005000000	RD7006005000000
RD5012005000000	RD5012005000000	RD5012005000000
RD5025005000000	RD5012005000000	RD5012005000000
RD5025005000000	RD5025005000000	RD5025005000000
RD5050007000000	RD5050007000000	RD5050007000000
RD5090007000000	RD5090007000000	RD5090007000000

Class 150 – Revo Single Acting

Line Pressure 20 Bar

Size		Air Supply - 4 Bar	Air Supply - 5 Bar	Air Supply - 6 Bar
1/2"	DN15	RS7006004800000	RS7006004800000	RS7006004800000
3/4"	DN20	RS5012005800000	RS5012005800000	RS5012005800000
1"	DN25	RS5012005800000	RS5012005800000	RS5012005800000
1 1/2"	DN40	RS5025005800000	RS5025005800000	RS5025005800000
2"	DN50	RS5050007A00000	RS5050007A00000	RS5050007A00000
2 1/2"	DN65	RS5050007800000	RS5050007800000	RS5050007800000
3"	DN80	RS5090007800000	RS5090007800000	RS5090007800000
4"	DN100	RS5090007A00000	RS5090007A00000	RS5090007A00000
6"	DN150	RS8205014A00000	RS8205014A00000	RS8205014A00000

Line Pressure 10 Bar

Air Supply - 4 Bar	Air Supply - 5 Bar	Air Supply - 6 Bar
RS7002004A00000	RS7002004A00000	RS7002004A00000
RS7006004A00000	RS7006004A00000	RS7006004A00000
RS5012005800000	RS5012005800000	RS5012005800000
RS5012005A00000	RS5012005A00000	RS5012005A00000
RS5025005800000	RS5025005800000	RS5025005800000
RS5050007800000	RS5050007800000	RS5050007800000
RS5090007800000	RS5090007800000	RS5090007800000
RS5090007A00000	RS5090007A00000	RS5090007A00000
RS8205014A00000	RS8205014A00000	RS8205014A00000

Class 600 – Revo Double Acting

Line Pressure 20 Bar

Size		Air Supply - 4 Bar	Air Supply - 5 Bar	Air Supply - 6 Bar
1/2"	DN15	RD7002003000000	RD7002003000000	RD7002003000000
3/4"	DN20	RD7006005000000	RD7006005000000	RD7002004000000
1"	DN25	RD7006005000000	RD7006005000000	RD7006005000000
1 1/2"	DN40	RD7006005000000	RD7006005000000	RD7006005000000
2"	DN50	RD5012005000000	RD5012005000000	RD5012005000000

Line Pressure 10 Bar

Air Supply - 4 Bar	Air Supply - 5 Bar	Air Supply - 6 Bar
RD7002003000000	RD7002003000000	RD7002003000000
RD7002004000000	RD7002004000000	RD7002004000000
RD7006005000000	RD7006005000000	RD7006005000000
RD7006005000000	RD7006005000000	RD7006005000000
RD5012005000000	RD5012005000000	RD5012005000000

Class 600 – Revo Single Acting

Line Pressure 20 Bar

Size		Air Supply - 4 Bar	Air Supply - 5 Bar	Air Supply - 6 Bar
1/2"	DN15	RS7002003800000	RS7002003800000	RS7002003800000
3/4"	DN20	RS7006004800000	RS7006004800000	RS7006004800000
1"	DN25	RS5025005800000	RS5025005800000	RS5025005800000
1 1/2"	DN40	RS5025005800000	RS5025005800000	RS5025005800000
2"	DN50	RS5050007800000	RS5050007800000	RS5050007800000

Line Pressure 10 Bar

Air Supply - 4 Bar	Air Supply - 5 Bar	Air Supply - 6 Bar
RS7002003800000	RS7002003800000	RS7002003800000
RS7006004800000	RS7006004800000	RS7006004800000
RS5025005800000	RS5025005800000	RS5025005800000
RS5025005800000	RS5025005800000	RS5025005800000
RS5050007800000	RS5050007800000	RS5050007800000

- Actuator selection is done considering PTFE Seat.
- Other selection charts available on request.

CRANE



CRANE



**CRANE PROCESS FLOW
TECHNOLOGIES (I) PVT LTD**

E7 / E8-2, Old MIDC,
Satara 415004, Maharashtra, India
Tel: +91 21 62244417

HEAD OFFICE

8th Floor, M Agile S.No 33/1
Samarth Colony, Baner Pune
411045, Maharashtra, India
Tel: +1 936 271 6500

Crane Co., and its subsidiaries cannot accept responsibility for possible errors in catalogues, brochures, other printed materials, and website information. Crane Co. reserves the right to alter its products without notice, including products already on order provided that such alteration can be made without changes being necessary in specifications already agreed. All trademarks in this material are the property of the Crane Co. or its subsidiaries. The Crane and Crane brands logotype (CENTER LINE®, COMPAC-NOZ®, CRANE®, DEPA® & ELRO®, DOPAK®, DUO-CHEK®, FLOWSEAL®, GYROLOK®, GO REGULATOR®, HOKE®, JENKINS®, KROMBACH®, NOZ-CHEK®, PACIFIC VALVES®, RESISTOFLEX®, REVO®, SAUNDERS®, STOCKHAM®, TEXAS SAMPLING®, TRIANGLE®, UNI-CHEK®, VALVES®, WESTLOCK CONTROLS®, WTA®, and XOMOX®) are registered trademarks of Crane Co. All rights reserved.